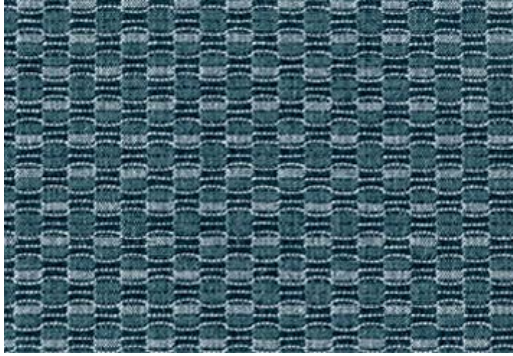


Tea Time



Specifications:

content: 100% Polyester  
 backing: Synthetic latex blend  
 finish: none  
 repeat: 0.5 in. / horizontal: 1.25 in. vertical  
 weight: 12.32 oz. / lin. yd. (382 g/M)  
 width: 54 inches

Flammability Passes:

California Tech. Bulletin #117-2013  
 UFAC Class 1  
 NFPA 260 Class 1

Performance:

abrasion: Heavy Duty – 30,000 cycles  
 (Wyzenbeek – Cotton duck Abradant) (ASTM D4157)  
 light fastness: Class 4/40 hrs. min. (AATCC16A)  
 color fastness: Class 3 (ASTM D3597, AATCC 8) Wet  
 Class 4 (ASTM D3597, AATCC 8) Dry  
 physical properties: Class 4.5 (ASTM D3511) Brush Pill  
 84 lbs. warp, 73 lbs. weft (ASTM D4034) Breaking Strength  
 56 lbs. warp, 53 lbs. weft (ASTM D4034) Seam Slippage

made in: China

Care & Cleanability:

Cleaning code **W** - Spot clean only with water based upholstery shampoo or foam upholstery cleaner. Pretest a small, inconspicuous area before proceeding. Do not over wet. Do not use solvents to spot clean. Cushion covers should not be removed and laundered. When cleaning a spill, blot immediately to remove the spilled material. Evenly clean the entire panel in a seam to seam fashion. Do not clean just the spots or stains. When an overall soiled condition has been reached and professional care is required, contact an IICRC certified firm ([www.iicrc.org](http://www.iicrc.org)).